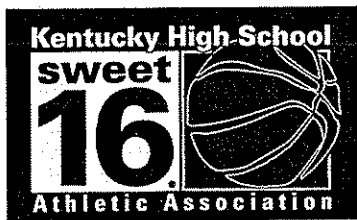


# 2001 KHSAA



## GIRLS' SWEET 16®

State Basketball Tournament

March 21-24

E.A. Diddle Arena • Bowling Green

### FINAL GAME STATS

Fri., March 23 - Session 5 - Game 1

DuPont Manual Crimson

vs.

Allen Co.-Scottsville Patriots

the  
**GREATEST**  
SHOW

in

hoops!

# KHSAA Basketball - Game Box Score

## DuPont Manual Lady Crimson vs. Allen Co.-Scottsville Lady Patriots

Date: 03/23/2001 Time: 12:00pm CST Site: Girls' Sweet 16-Diddle Arena Attendance: 7,123

### Visitors: Allen Co.-Scottsville Lady Patriots

##	Name	P	FG	3 Pt	FT	PTS	ORB	DRB	TR	PF	AST	TO	BS	ST	MIN
5	* Cammie Campbell		5/15	2/5	1/1	13	0	4	4	5	4	3	1	1	29:34
10	* Stacy Felchner		9/11	0/0	7/8	25	3	7	10	3	1	4	0	0	28:33
11	* Beth Pearson		0/1	0/0	0/0	0	0	3	3	3	3	3	0	0	28:18
22	* Ashley York		0/0	0/0	1/3	1	0	3	3	3	0	4	0	0	22:57
44	* Erin Brown		2/5	0/0	0/2	4	0	6	6	1	1	2	0	1	23:33
12	April Petty		0/1	0/1	0/0	0	0	1	1	0	1	1	0	1	14:26
14	Jennifer Towe		0/0	0/0	0/0	0	0	0	0	0	0	0	0	0	0:09
15	Tracy Poss														DNP
23	Wendy Morgan		0/0	0/0	0/2	0	0	0	0	0	0	0	0	0	0:15
24	Jana Towe		1/1	0/0	0/0	2	1	1	2	0	0	0	0	0	11:39
25	Hilary Gosnell		0/0	0/0	0/0	0	0	0	0	0	0	0	0	0	0:15
42	Cassie Wix		0/0	0/0	0/0	0	0	0	0	0	0	0	0	0	0:09
50	Holly Minix														DNP
32	Leslie Meador		0/0	0/0	0/0	0	1	0	1	0	0	0	0	0	0:06
40	Jenae Kirk		0/0	0/0	0/0	0	0	0	0	0	0	0	0	0	0:06
	Team						2	1	3						
	<b>Totals</b>		<b>17/34</b>	<b>2/6</b>	<b>9/16</b>	<b>45</b>	<b>7</b>	<b>26</b>	<b>33</b>	<b>15</b>	<b>10</b>	<b>17</b>	<b>1</b>	<b>3</b>	<b>160</b>

<b>Total FG</b>	1st Half	9/19	47.4%	2nd Half	8/15	53.3%	Game	17/34	50.0%
<b>3 PT FG</b>	1st Half	2/3	66.7%	2nd Half	0/3	0.00%	Game	2/6	33.3%
<b>Free Throws</b>	1st Half	2/4	50.0%	2nd Half	7/12	58.3%	Game	9/16	56.3%

### Home: DuPont Manual Lady Crimson

##	Name	P	FG	3 Pt	FT	PTS	ORB	DRB	TR	PF	AST	TO	BS	ST	MIN
20	* Morissa Benberry		1/6	1/5	0/0	3	0	1	1	3	4	1	1	3	28:47
24	* Chelsea Thompson		5/14	3/7	2/4	15	0	5	5	0	4	2	0	2	31:45
32	* Liz Plass		8/13	3/5	3/4	22	1	4	5	3	1	1	0	3	26:03
51	* Chandra Brown		2/2	0/0	0/0	4	1	0	1	4	0	0	1	0	10:13
55	* Sara McKemie		0/1	0/0	2/6	2	1	2	3	1	1	1	1	1	23:25
3	Ashley Butler		1/6	1/3	1/4	4	1	1	2	3	3	0	0	2	21:59
15	Erin Bolger		1/2	0/1	1/1	3	0	0	0	0	1	0	0	0	4:31
22	Dedra McMillion		0/0	0/0	0/0	0	0	0	0	1	0	0	0	0	0:15
23	Candyce Bingham		0/0	0/0	0/0	0	0	0	0	0	0	0	0	0	0:15
33	Ashley Miller		1/1	0/0	0/0	2	0	0	0	1	0	1	0	1	11:19
34	Ellen Doolittle														DNP
50	Kathryn Hohmann														DNP
54	Amy Uhlman		0/0	0/0	0/0	0	0	0	0	0	0	0	0	0	1:28
10	Tiffany Burton														DNP
	Team						2	1	3						
	<b>Totals</b>		<b>19/45</b>	<b>8/21</b>	<b>9/19</b>	<b>55</b>	<b>6</b>	<b>14</b>	<b>20</b>	<b>16</b>	<b>14</b>	<b>6</b>	<b>3</b>	<b>12</b>	<b>160</b>

<b>Total FG</b>	1st Half	9/26	34.6%	2nd Half	10/19	52.6%	Game	19/45	42.2%
<b>3 PT FG</b>	1st Half	4/12	33.3%	2nd Half	4/9	44.4%	Game	8/21	38.1%
<b>Free Throws</b>	1st Half	1/4	25.0%	2nd Half	8/15	53.3%	Game	9/19	47.4%

Free Throw Pts	All	DuP	3Pt Points	All	DuP	Pts/Possession	All	DuP
Pts off Turnovers	9	9	8	6	24	0.68	0.83	
Total Rebounds	7	16	3	6	8	2	9	
Off Rebound %	33	20	3	3	8	3	4	
Technical Fouls	33.3	18.8	81.3	66.7	62.3	37.7		
Officials	All	DuP	None	None	Mike Black, Robert Forker, Gary Teague			

	Qtr 1	Qtr 2	Qtr 3	Qtr 4	OT 1	OT 2	OT 3	OT 4	Total
Allen Co.-Scottsville Lady Patriots	11	11	12	11	0	0	0	0	45
DuPont Manual Lady Crimson	19	4	17	15	0	0	0	0	55

**KHSAA Basketball - Play by Play Report - Period: 1 (pg 1)**  
**DuPont Manual Lady Crimsonns vs. Allen Co.-Scottsville Lady Patriots**  
**Date: 03/23/2001 Time: 12:00pm CST Site: Girls' Sweet 16-Diddle Arena Attendance:**

## Name	Action	Action	Score	Clock	Diff	## Name	Action	Action
20 M Benberry	Start Game					5 C Campbell	Start Game	
24 C Thompson	Start Game					10 S Felchner	Start Game	
32 L Plass	Start Game					11 B Pearson	Start Game	
51 C Brown	Start Game					22 A York	Start Game	
55 S McKemie	Start Game					44 E Brown	Start Game	
51 C Brown	Jump Ball Win			1 7:59		44 E Brown	Jump Ball Loss	
24 C Thompson	FG Attempt	32 L Plass Off Reb	2-0	1 7:43	+2			
32 L Plass	Layup Made			1 7:35				
				1 7:09		22 A York	Turnover	
32 L Plass	Steal			1 7:07				
24 C Thompson	3Pt Attempt	51 C Brown Off Reb	4-0	1 7:04	+4			
51 C Brown	Putback Made			1 7:00				
32 L Plass	Personal Foul		4-1	1 6:54				
51 C Brown	Personal Foul		4-2	1 6:37	+3	10 S Felchner	FT Made	
				1 6:37	+2	10 S Felchner	FT Made	
32 L Plass	FG Made		6-2	1 6:26	+4			
				1 6:18		22 A York	Turnover	
32 L Plass	Steal			1 6:17				
32 L Plass	FG Attempt			1 6:10		44 E Brown	Def Rebound	
				1 6:04		22 A York	Turnover	
				1 6:04		12 A Petty	Enter Game	for 22 A York
				1 5:52		44 E Brown	Personal Foul	
55 S McKemie	FT Attempt	Lady Crimsonns Deadball Reb		1 5:52				
55 S McKemie	FT Attempt		6-5	1 5:52		12 A Petty	Def Rebound	
				1 5:34		5 C Campbell	FG Attempt	Lady Patriots Off Reb
				1 5:26	+1	5 C Campbell	3Pt Made	10 S Felchner Assist
24 C Thompson	3Pt Attempt			1 5:18		44 E Brown	Def Rebound	
51 C Brown	Block		6-7	1 4:57		10 S Felchner	FG Attempt	10 S Felchner Off Reb
				1 4:50	-1 (L1)	10 S Felchner	Putback Made	
32 L Plass	FG Attempt			1 4:43		10 S Felchner	Def Rebound	
				1 4:28		5 C Campbell	Turnover	
20 M Benberry	Steal			1 4:28				
24 C Thompson	3Pt Made		9-7	1 4:11	+2 (L2)			
				1 4:00		5 C Campbell	Turnover	
20 M Benberry	Steal			1 3:58				
24 C Thompson	3Pt Made	20 M Benberry Assist	12-7	1 3:47	+5			
				1 3:41		11 B Pearson	Turnover	
				1 3:41		11 B Pearson	Leave Game	
				1 3:41		22 A York	Enter Game	for 44 E Brown
				1 3:41		24 J Towe	Enter game	
20 M Benberry	3Pt Made	24 C Thompson Assist	15-7	1 3:36	+8			
20 M Benberry	Personal Foul			1 3:13				
33 A Miller	Enter Game	for 51 C Brown		1 3:13				
3 A Butler	Enter Game	for 55 S McKemie		1 3:13				
				1 3:09		10 S Felchner	FG Attempt	Lady Patriots Off Reb
				1 2:59				
24 C Thompson	Def Rebound			1 2:51		5 C Campbell	FG Attempt	
20 M Benberry	FG Attempt			1 2:44		5 C Campbell	Block	5 C Campbell Def Reb
			15-9	1 2:32	+6	10 S Felchner	FG Made	12 A Petty Assist
32 L Plass	Layup Made	20 M Benberry Assist	17-9	1 2:19	+8			
			17-11	1 1:58	+6	10 S Felchner	FG Made	5 C Campbell Assist
				1 1:45		5 C Campbell	Personal Foul	
32 L Plass	Leave Game			1 1:45				
51 C Brown	Enter Game	for 33 A Miller		1 1:45				
55 S McKemie	Enter game			1 1:45				
				1 1:45		44 E Brown	Enter Game	for 10 S Felchner
24 C Thompson	FG Made	55 S McKemie Assist	19-11	1 1:22	+8			
51 C Brown	Personal Foul			1 1:13				
54 A Uihman	Enter Game	for 51 C Brown		1 1:13				
3 A Butler	Personal Foul			1 0:50				
				1 0:50		5 C Campbell	Leave Game	
				1 0:50		10 S Felchner	Enter Game	for 24 J Towe
				1 0:50		11 B Pearson	Enter game	
				1 0:50		44 E Brown	FT Attempt	Lady Patriots Deadball Reb
55 S McKemie	Def Rebound			1 0:50		44 E Brown	FT Attempt	
3 A Butler	3Pt Attempt	3 A Butler Off Reb		1 0:02				

**End of Period Summary Lady Crimsonns 19 Lady Patriots 11**

**Largest Lead: Lady Crimsonns 15 Lady Patriots 7 (8 pts)**  
**Lead in Period: Lady Crimsonns 15 Lady Patriots 7 (8 pts)**  
 0 for 0 oppo pts  
 3 for 4 pts  
 8/15 for 53.3 %  
 0/2 for 0.00 %

**Turnovers**  
**2nd Chances**  
**Field Goals**  
**Free Throws**

**Lead Changes: 2 Ties: 0**  
**Lead Changes: 2 Ties: 0 (this period)**  
 6 for 11 oppo pts  
 3 for 2 pts  
 4/8 for 50.0 %  
 2/4 for 50.0 %

**KHSAA Basketball - Play by Play Report - Period: 2 (pg 1)**  
**DuPont Manual Lady Crimsons vs. Allen Co.-Scottsville Lady Patriots**  
 Date: 03/23/2001 Time: 12:00pm CST Site: Girls' Sweet 16-Diddle Arena Attendance:

##	Name	Action	Action	Score	Clock	Diff	##	Name	Action	Action
32	L Plass	Enter Game	for 54 A Uhlman		2 8:00		5	C Campbell	Enter Game	for 12 A Petty
20	M Benberry	3Pt Attempt			2 8:00		44	E Brown	Def Rebound	
3	A Butler	3Pt Attempt			2 7:42		22	A York	Turnover	(5 Sec Violation)
3	A Butler	FG Attempt		19-13	2 7:19	+6	22	A York	Def Rebound	
24	C Thompson	Steal			2 6:53		5	C Campbell	FG Made	
55	S McKemie	Turnover	(Traveling)		2 6:37		5	C Campbell	Def Rebound	
15	E Bolger	Enter Game	for 3 A Butler		2 5:57		44	E Brown	Turnover	
33	A Miller	Enter Game	for 55 S McKemie		2 5:34					
24	C Thompson	FG Attempt		19-16	2 5:33	+3	5	C Campbell	3Pt Made	11 B Pearson Assist
32	L Plass	3Pt Attempt			2 4:42		44	E Brown	Def Rebound	
20	M Benberry	Steal			2 4:31		44	E Brown	FG Attempt	10 S Felchner Off Reb
32	L Plass	Offensive Foul			2 4:28	+1	10	S Felchner	Putback Made	
32	L Plass	Turnover		19-18	2 4:20		10	S Felchner	Def Rebound	
20	M Benberry	Leave Game			2 3:59		10	S Felchner	Turnover	
55	S McKemie	Enter Game	for 33 A Miller		2 3:58					
3	A Butler	Enter game			2 3:55		22	A York	Charge Taken	
32	L Plass	3Pt Made		19-20	2 3:35	-1 (L3)	44	E Brown	FG Made	11 B Pearson Assist
Lady Crimsons	Def Rebound			22-20	2 3:35	+2 (L4)	5	C Campbell	3Pt Attempt	
24	C Thompson	Leave Game			2 3:35					
32	L Plass	Leave Game			2 3:26		44	E Brown	FG Made	11 B Pearson Assist
55	S McKemie	Leave Game			2 3:14					
3	A Butler	Leave Game			2 2:58		5	C Campbell	3Pt Attempt	
3	A Butler	Enter Game	for 15 E Bolger		2 2:56		24	J Towe	Enter Game	for 10 S Felchner
20	M Benberry	Enter game			2 2:56					
24	C Thompson	Enter game			2 2:56					
55	S McKemie	Enter game			2 2:56					
33	A Miller	Enter game			2 2:56					
20	M Benberry	3Pt Attempt			2 2:56					
33	A Miller	Steal			2 2:23		11	B Pearson	Def Rebound	
33	A Miller	Turnover			2 2:19		11	B Pearson	Turnover	
3	A Butler	Def Rebound			2 2:18					
3	A Butler	FT Made		23-20	2 2:16	+3	44	E Brown	Steal	
3	A Butler	FT Attempt	Lady Crimsons Off Reb		2 2:14		11	B Pearson	FG Attempt	
20	M Benberry	3Pt Attempt			2 2:12		22	A York	Personal Foul	for 22 A York
3	A Butler	FG Attempt			2 2:04		12	A Petty	Enter Game	
24	C Thompson	Def Rebound			2 2:04					
3	A Butler	Layup Att			2 2:04					
32	L Plass	Enter Game	for 20 M Benberry		2 2:04		44	E Brown	Def Rebound	
55	S McKemie	Def Rebound			2 1:57		5	C Campbell	FG Attempt	24 J Towe Off Reb
24	C Thompson	FG Attempt			2 1:33	+1	24	J Towe	Putback Made	
					2 1:30		5	C Campbell	Def Rebound	
					2 1:01		5	C Campbell	FG Attempt	
					2 0:47		Lady Patriots	Def Rebound		
					2 0:39		10	S Felchner	Enter Game	for 44 E Brown
					2 0:39					
					2 0:21		5	C Campbell	FG Attempt	
					2 0:00		24	J Towe	Def Rebound	

**End of Period Summary Lady Crimsons 23 Lady Patriots 22**

**Largest Lead: Lady Crimsons 15 Lady Patriots 7 (8 pts)**  
**Lead in Period: Lady Crimsons 19 Lady Patriots 11 (8 pts)**  
 3 for 5 oppo pts  
 1 for 0 pts  
 1/11 for 9.09 %  
 1/2 for 50.0 %

**Turnovers**  
**2nd Chances**  
**Field Goals**  
**Free Throws**

**Lead Changes: 4 Ties: 0**  
**Lead Changes: 1 Ties: 0 (this period)**  
 4 for 0 oppo pts  
 2 for 4 pts  
 5/11 for 45.5 %  
 0/0 for 0.00 %

## KHSAA Basketball - Game Box Score

### DuPont Manual Lady Crimson vs. Allen Co.-Scottsville Lady Patriots

Date: 03/23/2001 Time: 12:00pm CST Site: Girls' Sweet 16-Diddle Arena Attendance: Unknown

Visitors: Allen Co.-Scottsville Lady Patriots																
##	Name	P	FG	3 Pt	FT	PTS	ORB	DRB	TR	PF	AST	TO	BS	ST	MIN	
5	* Cammie Campbell		3/9	2/3	0/0	8	0	3	3	1	1	2	1	0	15:10	
10	* Stacy Felchner		4/6	0/0	2/2	10	2	2	4	0	1	1	0	0	12:48	
11	* Beth Pearson		0/1	0/0	0/0	0	0	1	1	0	2	2	0	0	13:09	
22	* Ashley York		0/0	0/0	0/0	0	0	1	1	1	0	4	0	0	11:33	
44	* Erin Brown		1/2	0/0	0/2	2	0	5	5	1	0	1	0	1	13:25	
12	April Petty		0/0	0/0	0/0	0	0	1	1	0	1	0	0	0	8:08	
14	Jennifer Towe														DNP	
15	Tracy Poss														DNP	
23	Wendy Morgan														DNP	
24	Jana Towe		1/1	0/0	0/0	2	1	1	2	0	0	0	0	0	5:47	
25	Hilary Gosnell														DNP	
42	Cassie Wix														DNP	
50	Holly Minix														DNP	
32	Leslie Meador														DNP	
40	Jenae Kirk														DNP	
	Team						2	1	3							
	<b>Totals</b>		<b>9/19</b>	<b>2/3</b>	<b>2/4</b>	<b>22</b>	<b>5</b>	<b>15</b>	<b>20</b>	<b>3</b>	<b>5</b>	<b>10</b>	<b>1</b>	<b>1</b>	<b>80</b>	
	<b>Total FG</b>		1st Half		9/19	47.4%	2nd Half	0/0	0.00%	Game	9/19	47.4%				
	<b>3 PT FG</b>		1st Half		2/3	66.7%	2nd Half	0/0	0.00%	Game	2/3	66.7%				
	<b>Free Throws</b>		1st Half		2/4	50.0%	2nd Half	0/0	0.00%	Game	2/4	50.0%				

Home: DuPont Manual Lady Crimson																
##	Name	P	FG	3 Pt	FT	PTS	ORB	DRB	TR	PF	AST	TO	BS	ST	MIN	
20	* Morissa Benberry		1/5	1/4	0/0	3	0	0	0	1	2	0	0	3	14:42	
24	* Chelsea Thompson		3/8	2/4	0/0	8	0	2	2	0	1	0	0	1	16:00	
32	* Liz Plass		4/7	1/2	0/0	9	1	0	1	2	0	1	0	2	11:58	
51	* Chandra Brown		1/1	0/0	0/0	2	1	0	1	2	0	0	1	0	5:19	
55	* Sara McKemie		0/0	0/0	0/2	0	0	2	2	0	1	1	0	0	12:35	
3	Ashley Butler		0/5	0/2	1/2	1	1	1	2	1	0	0	0	0	9:16	
15	Erin Bolger		0/0	0/0	0/0	0	0	0	0	0	0	0	0	0	2:36	
22	Dedra McMillion														DNP	
23	Candyce Bingham														DNP	
33	Ashley Miller		0/0	0/0	0/0	0	0	0	0	0	0	1	0	1	6:21	
34	Ellen Doolittle														DNP	
50	Kathryn Hohmann														DNP	
54	Amy Uihman		0/0	0/0	0/0	0	0	0	0	0	0	0	0	0	1:13	
10	Tiffany Burton														DNP	
	Team						1	1	2							
	<b>Totals</b>		<b>9/26</b>	<b>4/12</b>	<b>1/4</b>	<b>23</b>	<b>4</b>	<b>6</b>	<b>10</b>	<b>6</b>	<b>4</b>	<b>3</b>	<b>1</b>	<b>7</b>	<b>80</b>	
	<b>Total FG</b>		1st Half		9/26	34.6%	2nd Half	0/0	0.00%	Game	9/26	34.6%				
	<b>3 PT FG</b>		1st Half		4/12	33.3%	2nd Half	0/0	0.00%	Game	4/12	33.3%				
	<b>Free Throws</b>		1st Half		1/4	25.0%	2nd Half	0/0	0.00%	Game	1/4	25.0%				

Free Throw Pts	All	DuP	3Pt Points	All	DuP	Pts/Possession	All	DuP
Pts off Turnovers	2	1	2nd Chance Points	6	12	0.63	0.68	
Total Rebounds	5	11	Team Rebounds	6	4	2	1	
Off Rebound %	20	10	Def Rebound %	3	2	1	1	
Technical Fouls	45.5	21.1		78.9	54.5	66.7	33.3	
Officials	All	DuP						
			None					
			None					
			Mike Black, Robert Forker, Gary Teague					

	Qtr 1	Qtr 2	Qtr 3	Qtr 4	OT 1	OT 2	OT 3	OT 4	Total
Allen Co.-Scottsville Lady Patriots	11	11	0	0	0	0	0	0	22
DuPont Manual Lady Crimson	19	4	0	0	0	0	0	0	23

**KHSAA Basketball - Play by Play Report - Period: 3 (pg 1)**  
**DuPont Manual Lady Crimsons vs. Allen Co.-Scottsville Lady Patriots**  
 Date: 03/23/2001 Time: 12:00pm CST Site: Girls' Sweet 16-Diddle Arena Attendance:

##	Name	Action	Action	Score	Clock	Diff	##	Name	Action	Action
					3 8:00		12	A Petty	Leave Game	
					3 8:00		22	A York	Enter Game	for 24 J Towe
					3 8:00		44	E Brown	Enter game	
3	A Butler	Leave Game			3 8:00					
20	M Benberry	Enter Game	for 33 A Miller		3 8:00					
51	C Brown	Enter game			3 8:00					
32	L Plass	FG Made	20 M Benberry Assist	25-22	3 7:47	+3				
					3 7:23		5	C Campbell	3Pt Attempt	10 S Felchner Off Reb
					3 7:19	+1	10	S Felchner	Putback Made	
32	L Plass	3Pt Attempt		25-24	3 7:02		11	B Pearson	Def Rebound	
					3 6:43	-1 (L5)	10	S Felchner	FG Made	44 E Brown Assist
51	C Brown	FG Made	24 C Thompson Assist	27-26	3 6:18	+1 (L6)				
24	C Thompson	Def Rebound			3 5:46		44	E Brown	FG Attempt	
55	S McKemie	FG Attempt			3 5:38		10	S Felchner	Def Rebound	
55	S McKemie	Block	24 C Thompson Def Reb		3 5:18		5	C Campbell	3Pt Attempt	
32	L Plass	3Pt Made	24 C Thompson Assist	30-26	3 5:10	+4				
51	C Brown	Personal Foul			3 4:58					
51	C Brown	Leave Game			3 4:58					
3	A Butler	Enter Game	for 55 S McKemie		3 4:58					
33	A Miller	Enter game			3 4:58					
					3 4:58		22	A York	FT Attempt	Lady Patriots Deadball Reb
					3 4:58	+3	22	A York	FT Made	
33	A Miller	Layup Made	32 L Plass Assist	30-27	3 4:37	+5				
32	L Plass	Def Rebound		32-27	3 4:26		44	E Brown	FG Attempt	
20	M Benberry	3Pt Attempt			3 4:15		22	A York	Def Rebound	
32	L Plass	Def Rebound			3 3:56		5	C Campbell	FG Attempt	
32	L Plass	FG Attempt			3 3:26		22	A York	Def Rebound	
					3 3:18	+3	5	C Campbell	FG Made	
24	C Thompson	3Pt Attempt		32-29	3 2:49		5	C Campbell	Def Rebound	
					3 2:42	+1	44	E Brown	Layup Made	5 C Campbell Assist
24	C Thompson	3Pt Made	3 A Butler Assist	35-31	3 2:22	+4				
					3 2:12		10	S Felchner	Turnover	
3	A Butler	Steal			3 2:10					
20	M Benberry	Turnover			3 1:41					
					3 1:40		5	C Campbell	Steal	
20	M Benberry	Personal Foul			3 1:40					
					3 1:40					
20	M Benberry	Leave Game			3 1:40		22	A York	Leave Game	
55	S McKemie	Enter Game	for 32 L Plass		3 1:40		12	A Petty	Enter Game	for 44 E Brown
15	E Bolger	Enter game			3 1:40		24	J Towe	Enter game	
					3 1:40		10	S Felchner	Turnover	
					3 1:32					
3	A Butler	Steal			3 1:31					
15	E Bolger	3Pt Attempt			3 1:25		11	B Pearson	Def Rebound	
					3 1:22		5	C Campbell	Turnover	
24	C Thompson	Steal			3 1:21					
24	C Thompson	FG Attempt	Lady Crimsons Off Reb		3 1:19					
24	C Thompson	Layup Made	15 E Bolger Assist	37-31	3 1:12	+6				
					3 0:56		12	A Petty	Turnover	
55	S McKemie	Steal			3 0:54					
15	E Bolger	Layup Made	3 A Butler Assist	39-31	3 0:52	+8				
15	E Bolger	FT Made		40-31	3 0:52	+9	5	C Campbell	Personal Foul	
				40-33	3 0:36	+7	10	S Felchner	Layup Made	5 C Campbell Assist
33	A Miller	Personal Foul			3 0:36					
					3 0:36		22	A York	Enter Game	for 11 B Pearson
					3 0:36	+6	10	S Felchner	FT Made	
24	C Thompson	3Pt Attempt		40-34	3 0:00		10	S Felchner	Def Rebound	

**End of Period Summary Lady Crimsons 40 Lady Patriots 34**

**Largest Lead: Lady Crimsons 40 Lady Patriots 31 (9 pts)**  
**Lead in Period: Lady Crimsons 40 Lady Patriots 31 (9 pts)**  
 1 for 0 oppo pts  
 1 for 0 pts  
 7/15 for 46.7 %  
 1/1 for 100 %

**Turnovers**  
**2nd Chances**  
**Field Goals**  
**Free Throws**

**Lead Changes: 6 Ties: 0**  
**Lead Changes: 2 Ties: 0 (this period)**  
 4 for 5 oppo pts  
 1 for 2 pts  
 5/10 for 50.0 %  
 2/3 for 66.7 %

**KHSAA Basketball - Play by Play Report - Period: 4 (pg 1)**  
**DuPont Manual Lady Crimsons vs. Allen Co.-Scottsville Lady Patriots**  
 Date: 03/23/2001 Time: 12:00pm CST Site: Girls' Sweet 16-Diddle Arena Attendance:

## Name	Action	Action	Score	Clock	Diff	## Name	Action	Action
24 C Thompson	Leave Game			4 8:00				
55 S McKemie	Leave Game			4 8:00				
3 A Butler	Leave Game			4 8:00				
15 E Bolger	Leave Game			4 8:00				
32 L Plass	Enter Game	for 33 A Miller		4 8:00				
20 M Benberry	Enter game			4 8:00				
3 A Butler	Enter game			4 8:00				
24 C Thompson	Enter game			4 8:00				
55 S McKemie	Enter game			4 8:00				
				4 8:00		11 B Pearson	Enter Game	for 22 A York
24 C Thompson	FG Attempt			4 7:45		10 S Felchner	Def Rebound	
3 A Butler	Personal Foul			4 7:06				
			40-36	4 7:00	+4	10 S Felchner	Layup Made	11 B Pearson Assist
32 L Plass	Personal Foul			4 7:00		10 S Felchner	FT Attempt	
32 L Plass	Def Rebound			4 7:00				
24 C Thompson	Turnover	(Bad Pass)		4 6:42				
51 C Brown	Enter Game	for 55 S McKemie		4 6:35				
			40-38	4 6:22	+2	10 S Felchner	Layup Made	5 C Campbell Assist
3 A Butler	3Pt Made	24 C Thompson Assist	43-38	4 5:47	+5			
			43-40	4 5:23	+3	5 C Campbell	FG Made	
3 A Butler	Personal Foul			4 5:23				
				4 5:23		44 E Brown	Enter Game	for 24 J Towe
32 L Plass	3Pt Made	3 A Butler Assist	43-41	4 5:23	+2	5 C Campbell	FT Made	
51 C Brown	Personal Foul		46-41	4 5:05	+5			
				4 4:43				
55 S McKemie	Enter Game	for 51 C Brown		4 4:43		Lady Patriots	20 Sec Time Out	
				4 4:43				
			46-42	4 4:43	+4	22 A York	Enter Game	for 12 A Petty
			46-43	4 4:43	+3	10 S Felchner	FT Made	
				4 3:00		10 S Felchner	FT Made	
32 L Plass	Layup Made	20 M Benberry Assist	48-43	4 3:00	+5			
32 L Plass	FT Made		49-43	4 3:00	+6	22 A York	Personal Foul	
				4 2:57				
				4 2:41		44 E Brown	Turnover	(Bad Pass)
				4 2:28		24 J Towe	Enter Game	for 44 E Brown
				4 2:26		5 C Campbell	Personal Foul	
3 A Butler	FT Attempt	Lady Crimsons Deadball Reb		4 2:26				
3 A Butler	FT Attempt			4 2:26		10 S Felchner	Def Rebound	
20 M Benberry	Block	20 M Benberry Def Reb		4 2:07		5 C Campbell	FG Attempt	
				4 2:00		5 C Campbell	Personal Foul	
				4 2:00		Lady Patriots	Time Out	
				4 1:56		11 B Pearson	Personal Foul	
				4 1:55		11 B Pearson	Personal Foul	
32 L Plass	FT Made		50-43	4 1:53	+7	22 A York	Personal Foul	
32 L Plass	FT Made		51-43	4 1:53	+8			
				4 1:39		10 S Felchner	Turnover	
32 L Plass	Steal			4 1:39				
				4 1:36		5 C Campbell	Personal Foul	
				4 1:36		12 A Petty	Enter Game	for 5 C Campbell
32 L Plass	FT Attempt			4 1:36		10 S Felchner	Def Rebound	
55 S McKemie	Personal Foul		51-44	4 1:19	+7	10 S Felchner	FT Made	
			51-45	4 1:19	+6	10 S Felchner	FT Made	
				4 1:08		10 S Felchner	Personal Foul	
				4 1:08		Lady Patriots	20 Sec Time Out	
				4 1:08		44 E Brown	Enter Game	for 24 J Towe
24 C Thompson	FT Made		52-45	4 1:08	+7			
24 C Thompson	FT Attempt	55 S McKemie Off Reb		4 1:08				
55 S McKemie	FT Made		53-45	4 1:05	+8	10 S Felchner	Personal Foul	
55 S McKemie	FT Made		54-45	4 1:05	+9			
				4 0:45		11 B Pearson	Turnover	(Bad Pass)
				4 0:45		10 S Felchner	Personal Foul	
55 S McKemie	FT Attempt	Lady Crimsons Deadball Reb		4 0:45				
55 S McKemie	FT Attempt			4 0:45		44 E Brown	Def Rebound	
24 C Thompson	Def Rebound			4 0:33		12 A Petty	3Pt Attempt	
24 C Thompson	Turnover			4 0:30				
				4 0:29		12 A Petty	Steal	
20 M Benberry	Personal Foul			4 0:28				
32 L Plass	Def Rebound			4 0:28		22 A York	FT Attempt	
				4 0:15		11 B Pearson	Personal Foul	
20 M Benberry	Leave Game			4 0:15				
24 C Thompson	Leave Game			4 0:15				
32 L Plass	Leave Game			4 0:15				
15 E Bolger	Enter Game	for 3 A Butler		4 0:15				
22 D McMillion	Enter game			4 0:15				
23 C Bingham	Enter game			4 0:15				
54 A Uihman	Enter game			4 0:15				
				4 0:15		10 S Felchner	Leave Game	
				4 0:15		11 B Pearson	Leave Game	
				4 0:15		22 A York	Leave Game	
				4 0:15		44 E Brown	Leave Game	
				4 0:15		14 J Towe	Enter Game	for 12 A Petty
				4 0:15		23 W Morgan	Enter game	
				4 0:15		24 J Towe	Enter game	
				4 0:15		25 H Gosnell	Enter game	
				4 0:15		42 C Wix	Enter game	
24 C Thompson	FT Attempt	Lady Crimsons Deadball Reb		4 0:15				

KHSAA Basketball - Play by Play Report - Period: 4 (pg 2)  
 DuPont Manual Lady Crimson vs. Allen Co.-Scottsville Lady Patriots  
 Date: 03/23/2001 Time: 12:00pm CST Site: Girls' Sweet 16-Diddle Arena Attendance:

## Name	Action	Action	Score	Clock	Diff	## Name	Action	Action
24 C Thompson	FT Made		55-45	4 0:15	+10			
22 D McMillion	Personal Foul			4 0:06				
				4 0:06		14 J Towe	Leave Game	
				4 0:06		32 L Meador	Enter Game	for 42 C Wix
				4 0:06		40 J Kirk	Enter game	
				4 0:06		23 W Morgan	FT Attempt	Lady Patriots Deadball Reb
				4 0:06		23 W Morgan	FT Attempt	32 L Meador Off Reb

End of Period Summary Lady Crimson 55 Lady Patriots 45

Largest Lead: Lady Crimson 55 Lady Patriots 45 (10 pts)  
 Lead in Period: Lady Crimson 55 Lady Patriots 45 (10 pts)  
 2 for 2 oppo pts  
 1 for 2 pts  
 3/4 for 75.0 %  
 7/14 for 50.0 %

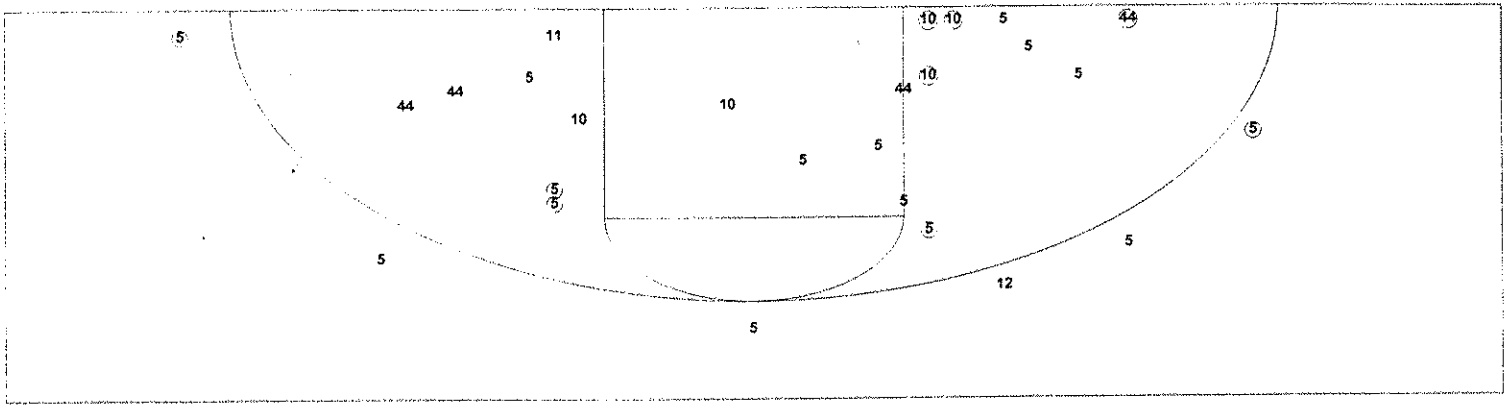
Turnovers  
 2nd Chances  
 Field Goals  
 Free Throws

Lead Changes: 6 Ties: 0  
 Lead Changes: 0 Ties: 0 (this period)  
 3 for 0 oppo pts  
 1 for 0 pts  
 3/5 for 60.0 %  
 5/9 for 55.6 %



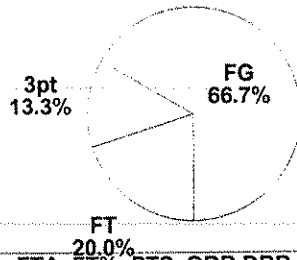


**KHSAA Basketball - TEAM SHOT CHART for the Lady Patriots**  
**DuPont Manual Lady Crimson vs. Allen Co.-Scottsville Lady Patriots**  
**DATE: 03/23/2001 TIME: 12:00pm CST SITE: Girls' Sweet 16-Diddle Arena**

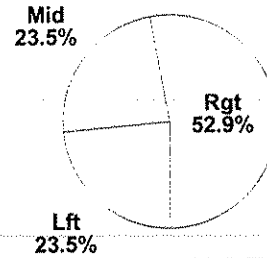


Shot Summary	M/A	%	PTS
3Pt FG	2/6	33.3%	6
2Pt FG	15/28	53.6%	30
Layups - L	1/1	100.0%	2
Layups - R	3/3	100.0%	6
Dunks	0/0	0.0%	0
Putbacks	4/4	100.0%	8
Overall Shooting	17/34	50.0%	36
Free Throws	9/16	56.3%	9
Total Points			45

Scoring Distribution

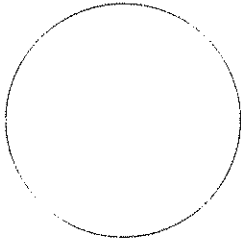


Scoring Locations



By Period	FG	FGA	FG%	3Pt	3PA	3P%	FT	FTA	FT%	PTS	ORB	DRB	TR	PF	AST	TO	BS	ST	P/S
1st Period	4	8	50.0	1	1	100	2	4	50.0	11	3	5	8	2	3	6	1	0	1.10
2nd Period	5	11	45.5	1	2	50.0	0	0	0.00	11	2	10	12	1	2	4	0	1	1.00
3rd Period	5	10	50.0	0	2	0.00	2	3	66.7	12	1	7	8	1	3	4	0	1	1.09
4th Period	3	5	60.0	0	1	0.00	5	9	55.6	11	1	4	5	11	2	3	0	1	1.22
Game	17	34	50.0	2	6	33.3	9	16	56.3	45	7	26	33	15	10	17	1	3	1.07

Scoring Breakdown



Scoring Range

